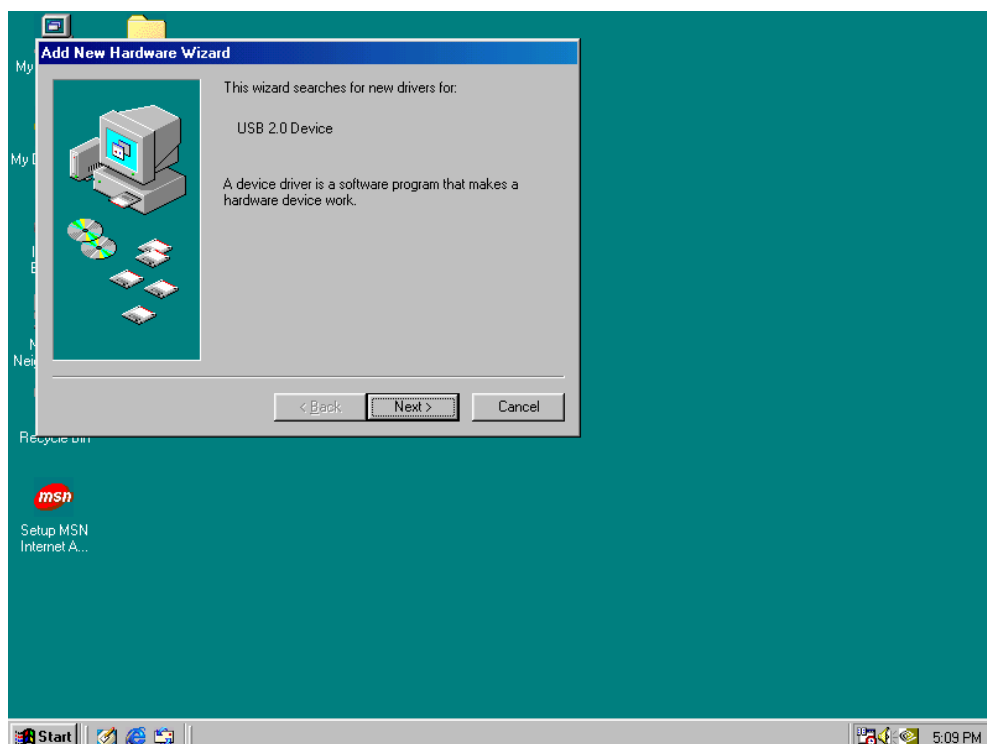


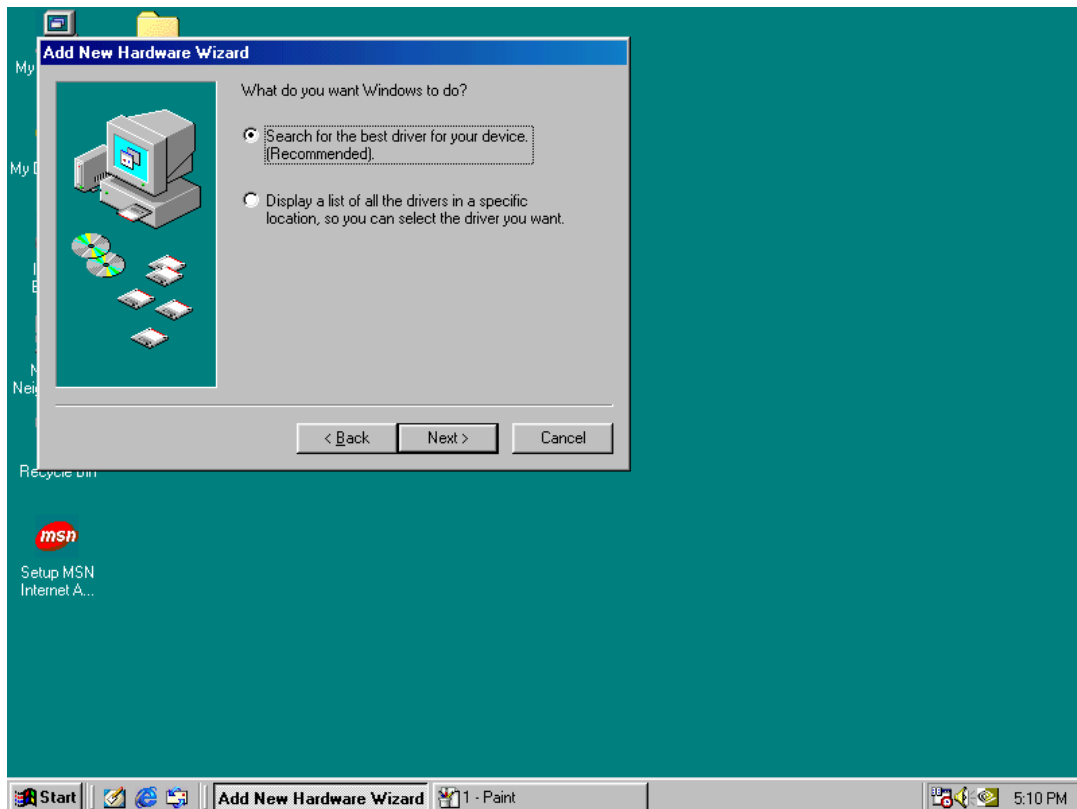
How to use this HDD external enclosure under Windows 98/98 SE (Manually Installation)

If this HDD external enclosure is adopted with DataStor USB4500 USB USB2.0 to IDE bridge controller, when you plug this enclosure onto your computer, the Windows 98/98 SE operating system would automatically detect this enclosure, but we still need to install its related driver, for there' s insufficient USB protocol supporting under Windows 98/98 SE when it was released by Microsoft, please follow the steps described below to let this enclosure operate normally with your computer.

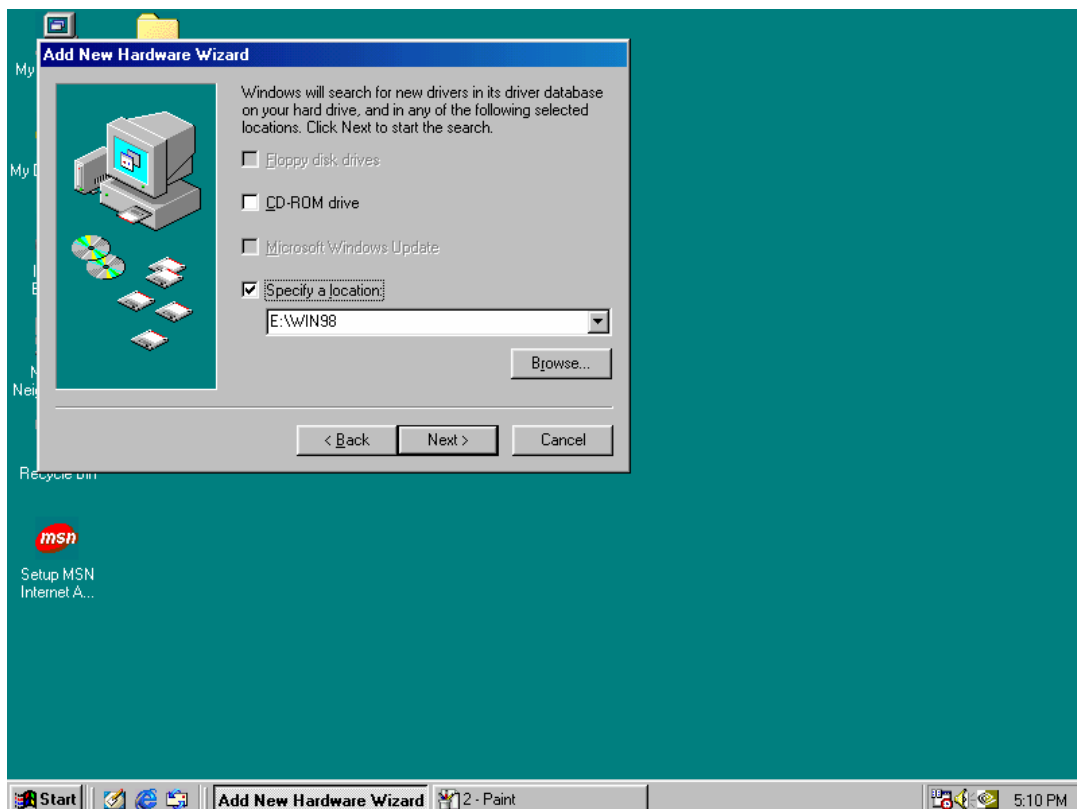
When first time plugging the enclosure into your computer running with Windows 98/98 SE, your computer will detect the box and jump out “Add New Hardware Wizard” window, please click “Next >”.



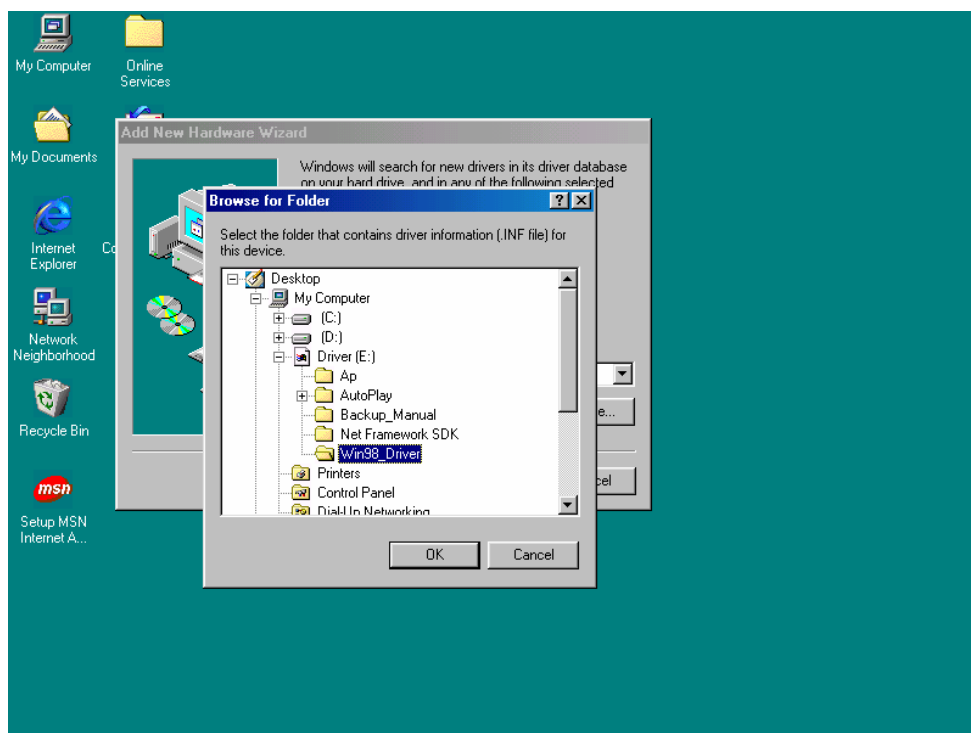
Please click to choose “Search for the best driver for your device.” to point out the location where the driver is. Then click “Next >” to proceed.



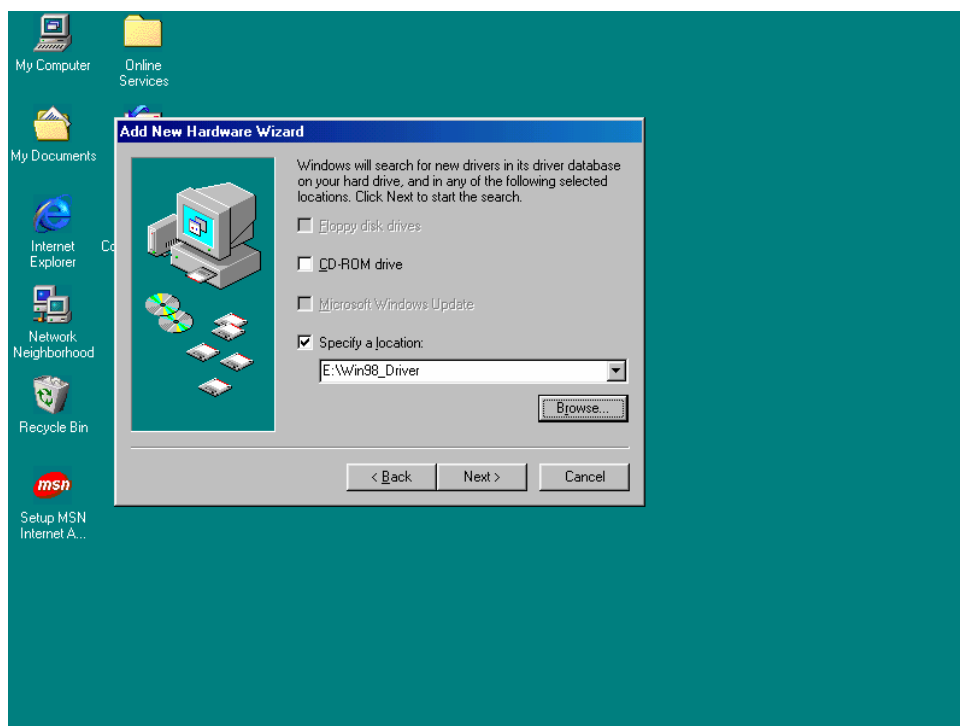
Please choose “Specify a location” and click the “Browse” button to locate the driver for installing.



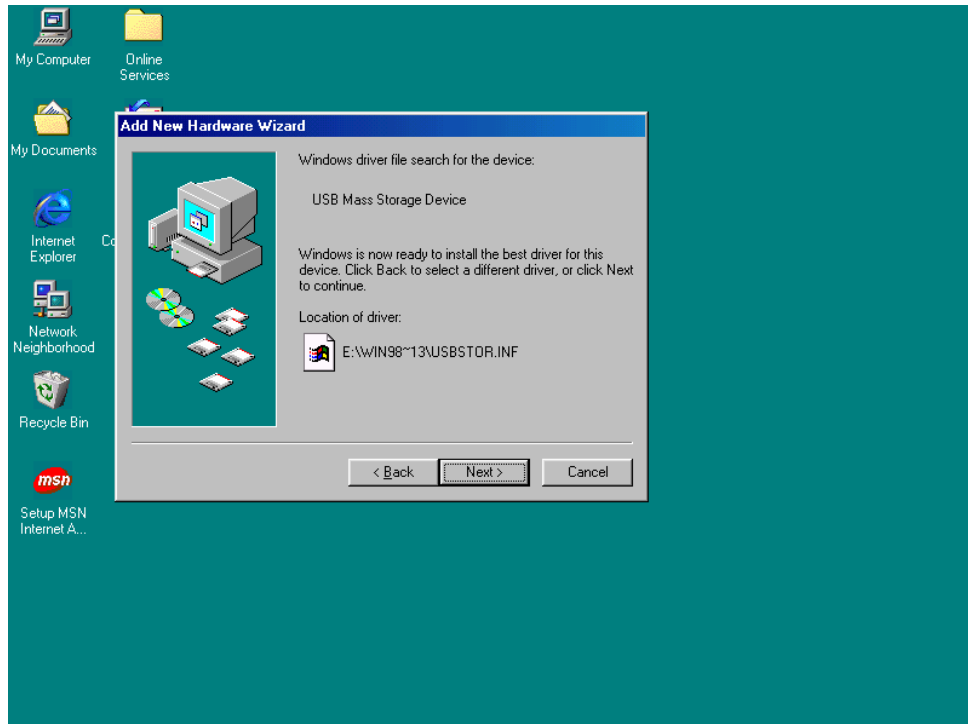
Change the file location to the CDROM (Please put our attached CD into your CDROM in advance), the driver is put under “Win98_Driver” directory.



Then click “Next >” to proceed the driver installation.



Windows 98/98 SE would identify the box with the driver you've allocated as a required element, please click "Next >" to proceed.



Once the driver is installed, this enclosure can be already identified by Windows as a USB Mass Storage Device, please click "Finish" and the system will ask you to reboot your computer for totally completing the driver installation process.

After rebooting, there will be a little more automatic steps to complete the driver installation, now you can use this HDD external enclosure normally, may you have nice experiences using our products!

