

I 、Package and Accessories

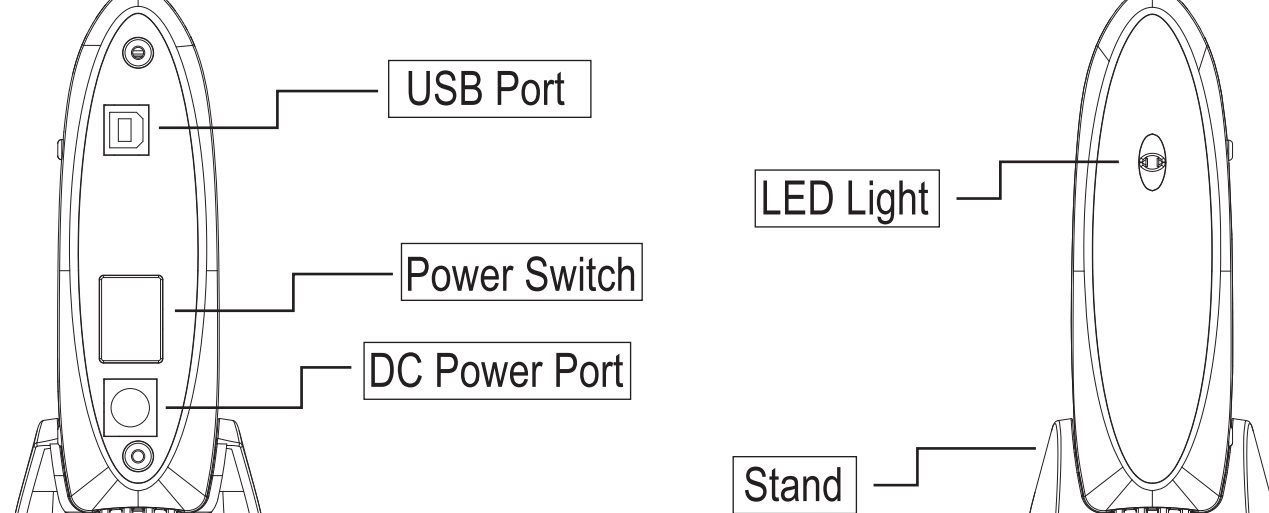
1. Please check the outer look of product after unpacks. If find any physical damage, please contact the dealer for exchange
2. Accessories:

Model No. / Interface	EE35-3-U USB2.0
User Manual	1PCS
CD-ROM Driver	1PCS
AC Power Adaptor	1PCS
AC Power Cable	1PCS
USB2.0 Connecting Cable	1PCS
Stand	1PCS
Screw Package	1SET

II 、O/S requirement

Supports operating system: Windows 98 / 2000 / ME / XP / Mac OS

III 、Ports and Names



1

IV 、Hardware Installation

1. Remove the USB cover by pulling from right to left direction (GR1)



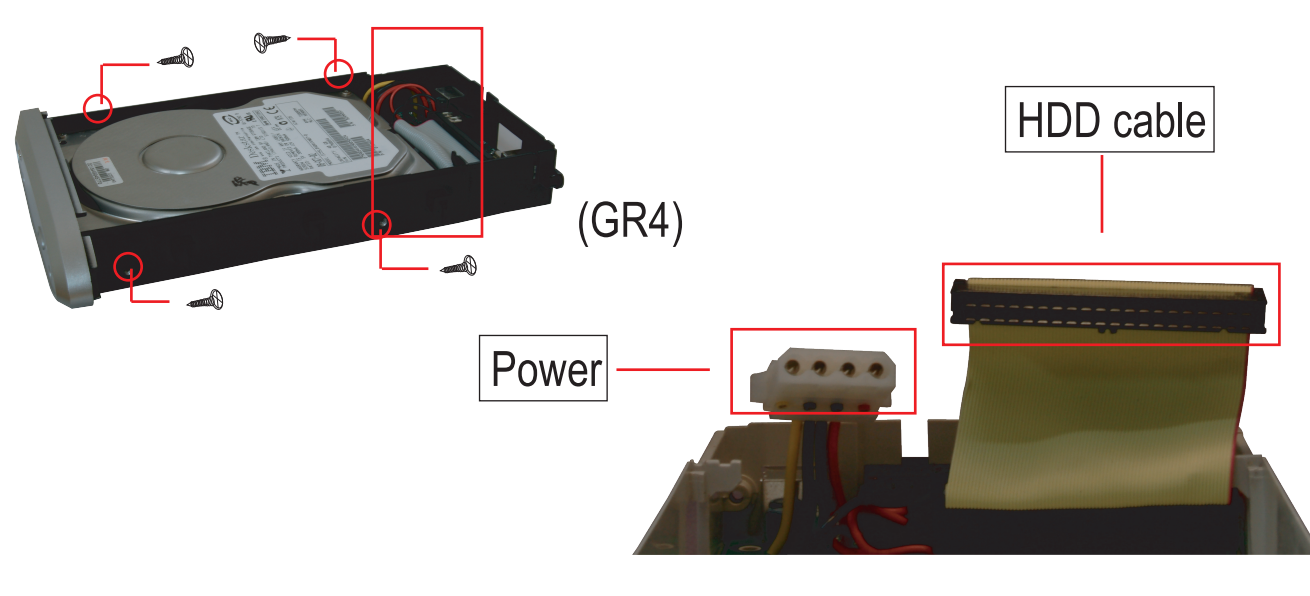
2. Pull out the Aluminum strip from right to left direction (GR2)



3. Remove the LED cover by pulling from left to right direction (GR3)

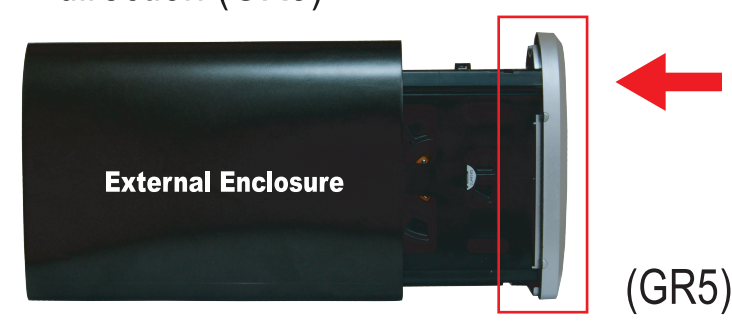


4. Connect HDD cable, power and screw it firmly (GR4)



2

5. Insert the LED cover along with pc board into the body case from right to left direction (GR5)



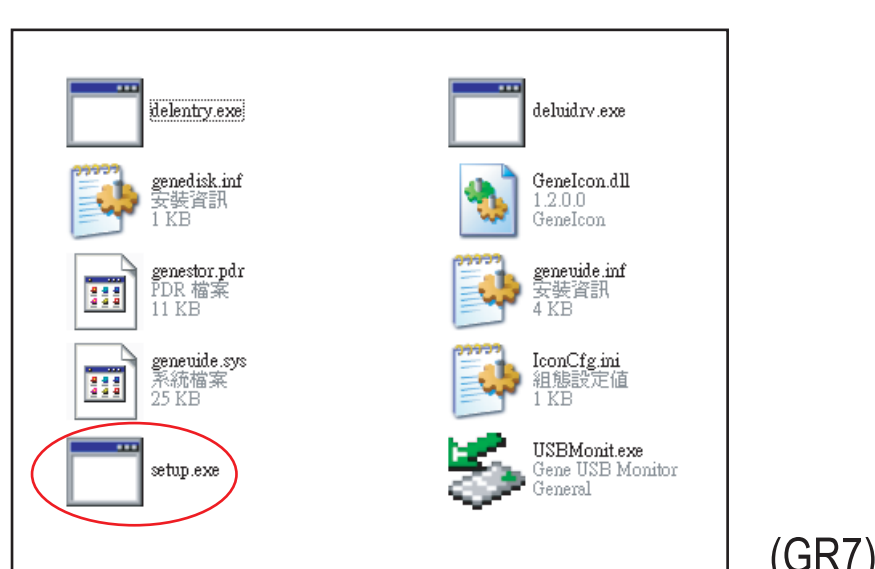
6. Place back the Aluminum stripe and USB cover, screw the cover firmly to the body case. Connect the power cable and USB cable to finish (GR6)



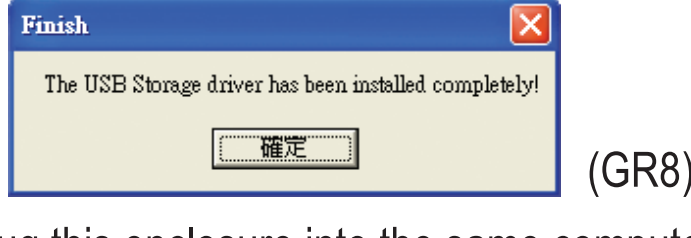
V 、Driver Installation

5-1 WINDOWS 98 SE

1. PC will automatically detects new USB Storage Device When connect USB cable to PC.
2. Put the Driver CD into CD Driver, a new folder will appears as "WIN98 for EE35-3-U", enter and click SETUP. (GR7)
3. When the installation is completed, will show a dialog "The USB Storage driver has been installed completely". (GR8)



3



*Next time when you plug this enclosure into the same computer, it will be recognized automatically. No driver installation is needed again.

5-2 WINDOWS ME /2000 / XP

No driver installation is needed for WINDOWS ME / 2000 / XP

5-3 MAC OS 8.6

When work under MAC OS 8.6, please install "Mass Storage Support 1.3.5" software

The software can be downloaded from Apple <http://www.apple.com/support>

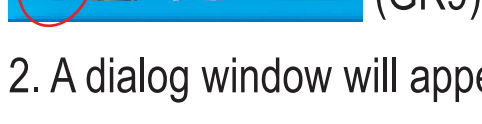
5-4 MAC OS 9.0 or above version

When work under MAC OS 9.0 or above version, no driver installation is needed

VI 、Safety Removal


Please follow the steps as below to remove this external enclosure safely

1. Double click on green arrow icon at right down corner of screen (GR9)



2. A dialog window will appear for disconnecting confirmation
3. Follow the steps of instruction to safely remove portable enclosure

VII 、Trouble Shooting

When the icon  appears at the right down corner on the screen, but the external HDD can't be found, please check the device as below:

- A. Please check if HDD has been installed correctly
- B. Please check correct driver has been installed for this enclosure
- C. Please check if the new HDD has been formatted, if no, please use "FDISK" to set the capacity of your HDD, "FORMAT" HDD by standard procedures.

CAUTION: "FDISK" or "FORMAT" will wipe out all the data and information in the hardware, please have a backup copy before starting the formatting

4